



flotex[®]

WARMTH
OF A CARPET,
RESISTANCE
OF A RESILIENT FLOOR

creating better environments

Forbo

FLOORING SYSTEMS

STYLISH AND PRACTICAL FLOCKED FLOOR COVERING

Flotex is an innovative flocked flooring technology combining the durability and cleanability of resilient floorings with the softness and warmth offered by carpet. Flotex is a strong and hygienic floor, and being completely waterproof, it is also the only truly washable textile floor.



Flotex is awarded the prestigious Allergy UK Seal of Approval™ and proven to have positively impact on the lives of allergy sufferers.. Because of its highly dense pile, twice as many allergens are trapped in Flotex's nylon fibres and released upon vacuuming in comparison to conventional carpet.





ELEVATE YOUR SPACE WITH STYLE AND UNIQUE PERFORMANCE

Incorporating Flotex into your design is more than just selecting a flooring solution; it's a choice to transform your space into a haven of both style and harmony. Flotex seamlessly combines aesthetics and functionality to create a flooring solution that's not only visually appealing but also exceptionally

practical. Whether you're designing a hotel, a busy hallway, or a dynamic office environment, Flotex stands out as the ideal choice to enhance the comfort, durability, and overall ambience of your space.

Flotex Code s203084 | mineral, s203018 | nickel

FLOTEX IS **SAFE & QUIET**

- Flotex is a unique flocked flooring that prevents mold and odors thanks to its technical and hygienic qualities.
- Flotex provides a safe environment for all age groups as it prevents tripping or slipping hazards both in dry and wet conditions.
- Excellent sound absorption properties make Flotex an acoustic flooring solution with >21 dB impact sound reduction.



Flotex planks ombré 149008 | tundra, 149005 | estuary, Flotex planks montage 147008 | tundra, 147005 | estuary



Open space offices are not a problem, the 21dB acoustic rating will bring noise down.

FLOTEX IS HYGIENIC & WASHABLE

- Easily washable and fast-drying, enabling rapid maintenance and minimal downtime. Most type of stains can be removed through vacuuming, steam cleaning or simply with water.
- The waterproof backing prevents mould growth and inhibits odour development.
- Dust and allergens are efficiently captured by the nylon fibres, and effortlessly released during vacuuming. Certified by the British Allergy Foundation, guaranteeing improved indoor air quality.



*Flotex is suitable
for all kinds
of locations,
even the most
unexpected ones.*

Flotex Metro s246028 | jade, s246032 | petrol

FLOTEX IS STRONG & COMFORTABLE

- Engineered for long-term performance, it withstands intensive foot traffic while maintaining its structure, appearance and colour over time.
- Exceptional surface durability achieved through an ultra-high density of up to 80 million nylon 6.6 fibers per square meter.
- Designed to enhance safety for all age groups, it prevents tripping or slipping hazards both in dry and wet conditions.
- An impact sound reduction of > 21dB ensures excellent acoustic comfort, even in high traffic environments.
- Its advanced acoustic performance reduces noise distraction, making it ideal for spaces where concentration or relaxation are essential.
- Soft and warm underfoot enhances the overall wellbeing while providing a comfortable walking experience.



*Heavy footfall or castor
chair wheels, nothing will
break the Flotex fibres.*



Flotex Code s203073 | nimbus

THE SMART FLOORING SOLUTION

HYGIENIC. DURABLE. COMFORTABLE.

If you are looking for an easy to clean, highly effective hygienic product that is safe, extremely durable and stain resistant then Flotex is the only solution.

This innovative flocked technology combining the durability and cleanability of resilient floors with the softness and warmth offered by carpet, can be used in many applications where not all types of floors will survive:

- **High traffic areas** - airports, public buildings, convention centers – places where many people gather
- **Food & beverage areas** - restaurants, casinos, hotels – places where people expect luxury but where spills are common and need to be cleaned without bothering the customer
- **Areas with extreme conditions** - ski centers, changing rooms, trains – places where people don't bother being careful with the floor as they expect it withstands the situation.

It feels like a carpet and cleans like a resilient! But it is not just a functional floor covering, also a design choice.



HIGH TRAFFIC AREAS

Imagine locations where there are many people walking over your floor, heavy footfall all day, wheeled traffic, rolling suitcases, luggage or shopping carts. Not a location where you would

expect a carpet. But it would help to reduce noise, avoid slip or trip accidents and increase a luxury feel. With Flotex this is simply possible.

FOOD & BEVERAGE AREAS

Places where people eat and drink are a base for spills. Not a place where you would think of a textile floor. However it would help with acoustics and a warm atmosphere. Therefore Flotex is to the rescue since it can be cleaned with water and no stain is too difficult to clean. So decide on your dream floor and use it as you like.



EXTREME CONDITIONS

You would never expect heavy ski boots, ice skates or shopping carts on a carpet. On the other hand it would be ideal since the noise that these items normally produce over a hard or ceramic floor is enormous. Flotex is extremely hard wearing and the nylon piles will not break. Besides it is also easy to clean so no reason not to choose.



flotex® THE SMART FLOORING SOLUTION



UP TO 21 dB
IMPACT SOUND
REDUCTION AND 0.10 aw
IN ROOM SOUND
ABSORPTION



EXCELLENT
SLIP RESISTANCE
WHEN WET



WASHABLE and
WATERPROOF



MECHANICAL
WET CLEANING
POSSIBLE



APPROVED BY
THE BRITISH
ALLERGY
FOUNDATION



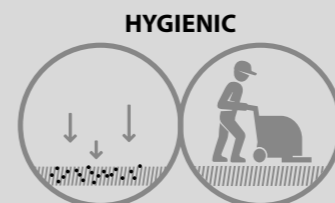
FLOTEX

Up to 80 million straight nylon fibres per m2 are electrostatically flocked into the backing. The unique structure ensures dirt and allergens can be released when vacuumed.



CARPET

Loop and cut pile carpets have a structure that makes removing allergens and fine dust very difficult in comparison to the smooth, straight and almost upright fibres in Flotex flocked flooring.



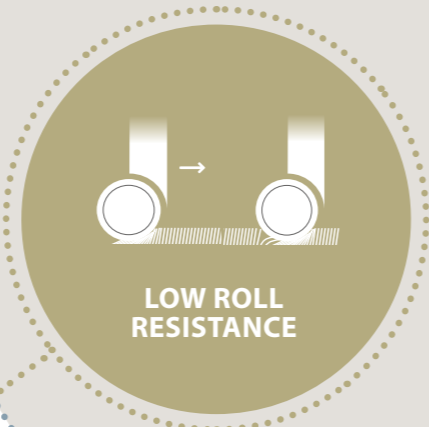
HYGIENIC

30% MORE SOIL
RELEASED THAN CARPET

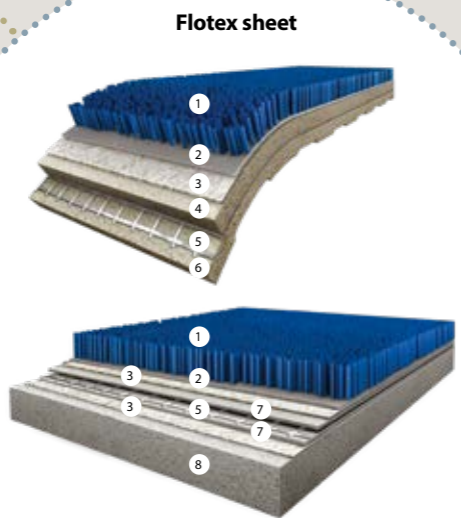


PHTHALATE
FREE

**STRAIGHT
NYLON 6.6
FIBRES (FLOCK)**
capture fine dust and
allergens which are easily
released when vacuumed



LOW ROLL
RESISTANCE



Flotex sheet

Flotex tile

- 1 Nylon 6.6 pile
- 2 Flock adhesive
- 3 Nonwoven fibreglass
- 4 Closed cell PVC foam
- 5 Fibreglass net reinforcement
- 6 Closed cell PVC foam
- 7 Compact PVC layer
- 8 Recycled PVC Backing

**UP TO
80 MILLION**
fibres per m²
ensures high
durability

**UP TO 59%
RECYCLED
CONTENT**

**Vacuuming removes
almost DOUBLE the
ALLERGENS compared to
carpet**

**SAFE AND
ULTRA LOW
EMISSIONS**

THE PILLARS OF OUR AMBITION

Three words are at the foundation of everything we do:

Transparency, circularity and renewability

PRODUCT DEVELOPMENT AND DESIGN (PRODUCT DEVELOPMENT WITH CIRCULARITY AND USERS IN MIND)

- Flotex is 100% phthalate free
- Fully transparent choices by using the EPD's which are 3rd party verified, using only 100% safe and traceable REACH compliant materials
- All Flotex products are manufactured with 100% green electricity and have very low product emissions that are below the industry average
- Flotex is approved by the British Allergy Foundation as it traps dust and allergens on the surface and releases them with a simple vacuum

SOURCING AND RAW MATERIALS (MAXIMIZING THE USE OF SUSTAINABLE AND RENEWABLE RAW MATERIALS)

- Maximized use of recycled content in all products, Flotex tiles & planks contain up to 59% recycled content and actual content is published in our EPD's
- Controlled supply chain certification -ISO 140001 and 9001 standards and SA8000 for ethical supply chain
- Use of recycled materials back to our own products, all our raw materials meet the strictest health requirements

PRODUCTION AND DISTRIBUTION (CARBON NEUTRAL AND ZERO WASTE PRODUCTION)

- Flotex production is dedicated to the concept of zero waste. 86% of factory waste is recycled
- Flotex is produced in an environment where substantial reductions of CO2 have been achieved and additional improvements are planned
- We have eliminated excess packaging from jumbo

rolls of Flotex, which has cut our cardboard usage by 50 tons/ year

- We use water-based inks and dyes to manufacture Flotex, no additional chemical processes take place other than high temperature steam treatment to secure the colours

LONG LASTING & EASY TO MAINTAIN (HIGHLY DURABLE AND FIT-FOR-PURPOSE SOLUTIONS)

- Modular or loose lay installation like Flotex tiles and planks or sheet with flotex next backing can save time, installation waste, money and the environment
- Forbo Flooring offers compatible Coral entrance flooring to keep Flotex cleaner for longer and reduce cleaning by up to 65%
- Thanks to its hard-wearing properties and durability benefits, Flotex flocked flooring has a product lifetime that surpasses that of ordinary textiles
- The very dense structure of Flotex prevents the penetration of dirt that remains on the surface
- The vertical fibers easily release dust, allergens and dirt

RECYCLING AND END-OF-LIFE (RECREATING VALUE AT THE END)

- Back to the floor projects – returned modular floors can be recycled to close the materials loop
- Sheet products are offered with Flotex next backing option which is a loose lay solution so it can be reused

THE THEMES WE NEED TO GO AROUND TO MEET OUR AMBITION

1. Product development and design

2. Sourcing and raw materials

3. Production & distribution

4. Long lasting & easy to maintain

5. Recycling & end of life

flotex®

FLOCKED FLOORING IN SHEET, TILE AND PLANK

Flotex is a floor covering that looks and feels like a carpet without any of the drawbacks of a textile floor covering. It has a smooth, velour like surface that is comfortable to walk on and warm underfoot, with excellent slip resistant and acoustic properties.

flotex® colour

Three versatile and fresh designs make up the Flotex Colour collection: Metro, Calgary and Penang. Together they offer a range of 61 unique colourways. All are available in sheet and tile.



flotex® advance

The Flotex Advance collection features 2 designs, Latitude and Code, both designed specifically to create a contemporary feel within any space. These designs offer a versatile blend of aesthetics and functionality. All Flotex Advance items are available as sheet and tile.



flotex® naturals

This special range of digitally printed Flotex delivers the appearance of a real wood floor but with improved acoustics and reduced maintenance costs. All Flotex Naturals items are available as sheet.



flotex® planks

The performance attributes of Flotex along with the design versatility of the Planks collection, make these modular floor coverings ideal for use in workspaces as well as high traffic areas such as call centres, hotels and transport hubs.



flotex® created by

We have been very privileged to team up with some amazing designers. Many have found inspiration from our advanced production methods which in many cases, allow high definition digital printing, enabling the designers to achieve an exact translation of their design vision. All Flotex Created by items are available as sheet.



flotex® hospitality & leisure

Whether in hotels, leisure areas or restaurants, you need a high performance floor covering that provides comfort and safety while giving pride of place to design. We offer a special collection of easy-care Flotex floors with striking designs for the hospitality & leisure segment.



flotex® vision library

Although we have a very wide range of flooring options we can still imagine that you are looking for something completely different. With the possibility of digital printing new opportunities arise.



flotex® bespoke

When even the existing digital design collection is not enough, we can go one step further. You design your own floor! We can recolour one of our existing designs with the colours of your choice or we can print your own image in high definition for a unique floor covering.





Flotex Penang s482016 | coral

flotex® colour

Choice is about possibilities, and choice in design starts with colour. Colour can communicate a message without words, it evokes emotions, creates associations and has the power to effect the whole mood and feel of an environment.

Colour is personal and conveys our feelings and values, it is a fundamental part of our freedom to choose. Flotex Colour contains of three designs; Penang, Metro and Calgary.

All Flotex Colour items are available as sheet and tile.

flotex® penang

Penang represents a stunning look for any modern environment. Its hint of wood grains provides a quiet neutral floor design.

flotex® metro

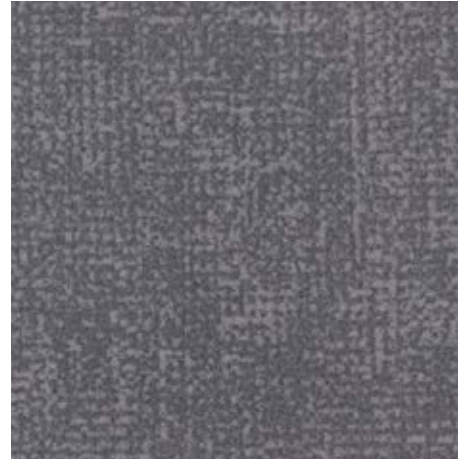
Metro is a versatile semi-plain floor design which covers a wide and modern colour bank. The understated pattern conveys texture without definite form, creating an authentic feel that is unique to Flotex flooring.

flotex® calgary

Calgary offers a wide range of colours in a soft, natural design that can easily be combined with other Flotex or resilient ranges like Marmoleum. Calgary is the perfect choice for application areas that require a muted ambiance.



calgary | carbon LRV 18% s290019 t590019
calgary | cement LRV 13% s290012 t590012



metro | nimbus LRV 13% s246005 t546005



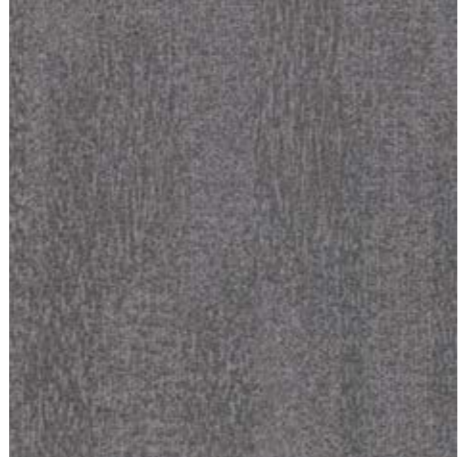
penang | smoke LRV 14% s482005 t382005



penang | grey LRV 10% s482037 t382037
metro | grey LRV 8% s246006 t546006



metro | anthracite LRV 3% s246008 t546008



penang | nimbus LRV 14% s482017 t382017



calgary | grey LRV 8% s290002 t590002



penang | anthracite LRV 3% s482001 t382001



metro | ash LRV 4% s246007 t546007



penang | zinc LRV 9% s482007 t382007



penang | mercury LRV 10% s482004 t382004



penang | ash LRV 5% s482031 t382031



calgary | ash LRV 4% s290010 t590010



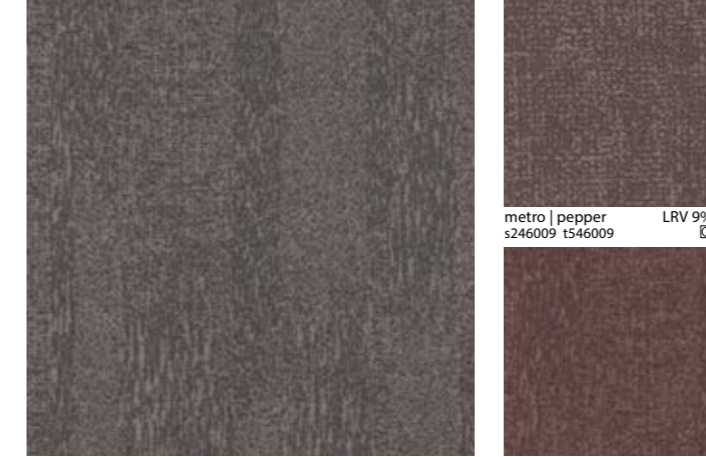
calgary | quartz LRV 28% s290011 t590011
penang | bamboo LRV 21% s482018 t382018
metro | sand LRV 18% s246012 t546012



calgary | linen LRV 18% s290026 t590026
penang | flax LRV 15% s482075 t382075



calgary | espresso LRV 15% s290023 t590023
metro | pebble LRV 14% s246011 t546011
penang | beige LRV 12% s482015 t382015



penang | shale LRV 10% s482020 t382020
metro | pepper LRV 9% s246009 t546009



penang | dusk LRV 8% s482023 t382023
metro | berry LRV 5% s246017 t546017



metro | cocoa LRV 7% s246015 t546015
metro | concrete LRV 4% s246014 t546014
metro | chocolate LRV 3% s246010 t546010



Flotex Metro s246011 | pebble, s246017 | berry



calgary | sahara LRV 29% s290006 t590006



metro | gold LRV 29% s246036 t546036



calgary | melon LRV 10% s290005 t590005



penang | coral LRV 16% s482016 t382016
calgary | fire LRV 11% s290024 t590024



metro | red LRV 9% s246026 t546026
metro | tangerine LRV 18% s246025 t546025

Usage classification

☐ Superior appearance rating ☑ Good appearance rating ● Moderate appearance rating s = Sheet t = Tile



penang | sage LRV 35%
s482006 t382006



calgary | lime LRV 36%
s290014 t590014



metro | citrus LRV 18%
s246019 t546019



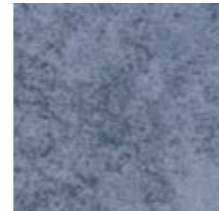
Flotex Metro s246018 | mineral



calgary | aqua LRV 29%
s290021 t590021



calgary | sky LRV 15%
s290001 t590001



calgary | riviera LRV 16%
s290025 t590025



metro | apple LRV 15%
s246037 t546037



calgary | menthol LRV 17%
s290004 t590004



metro | mineral LRV 15%
s246018 t546018



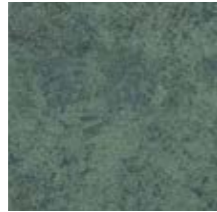
penang | sapphire LRV 17%
s482011 t382011



metro | lilac LRV 9%
s246034 t546034



penang | evergreen LRV 7%
s482010 t382010



calgary | moss LRV 13%
s290009 t590009



metro | jade LRV 7%
s246028 t546028



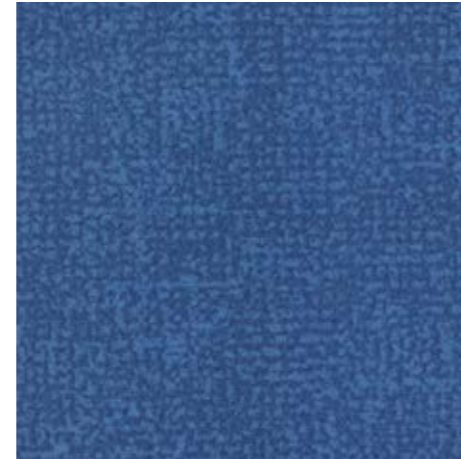
metro | gull LRV 11%
s246004 t546004



metro | evergreen LRV 6%
s246022 t546022



metro | tempest LRV 7%
s246002 t546002



metro | lagoon LRV 10%
s246020 t546020



penang | neptune LRV 10%
s482026 t382026



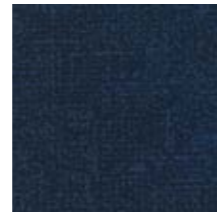
calgary | azure LRV 4%
s290015 t590015



metro | petrol LRV 4%
s246032 t546032



metro | carbon LRV 5%
s246024 t546024



metro | indigo LRV 3%
s246001 t546001



penang | azure LRV 4%
s482116 t382116



Flotex Calgary s290021 | aqua, s290011 | quartz

Usage classification

☐ Superior appearance rating ☑ Good appearance rating ● Moderate appearance rating s = Sheet t = Tile

flotex® advance

The Flotex Advance collection features 2 designs, Latitude and Code, both designed specifically to create a contemporary feel within any space. These designs offer a versatile blend of aesthetics and functionality. The Flotex Advance sheet items have a Flotex Next backing which means it can be installed as loose lay.

We offer you even more flexibility with the Flotex Advance items as you can request for the Flotex Code and Flotex Latitude in any colour you like to make it a bespoke carpet in a way it matches your interior best.

All Flotex Advance items are available as sheet and tile.

flotex® latitude

Offering a calm yet sophisticated aesthetic look, the inspiration for Latitude comes from the transient elements of free-flowing water. Detailing subtle gradients of light and dark the design maintains a fluidity creating modern and effortless comfort to any space.

flotex® code

Code pays homage to the creativity of the office worker offering a connection to the art of the typewriter, used by many as a means to produce inspirational and innovative design. The interplay of letters and characters layer and overlay to form a unique and abstract pattern.

Flotex Advance recolouration

When you like the Latitude and Code design but you are after a special colour we can create this for you. Please contact your local sales contact and we start the process together to make the ultimate floor.

Flotex Next backing

Read everything on the special loose lay installation options of Flotex Advance with the standard Next backing. Save time, money and the environment and install without any glue. More information about Flotex Next backing can be found on page 51.

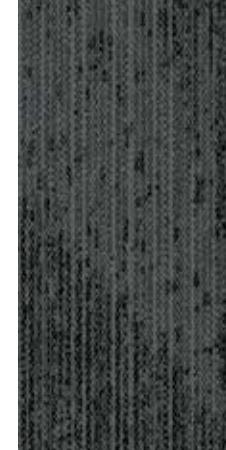




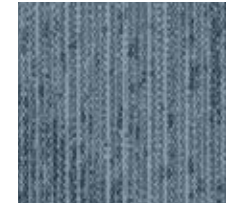
latitude | nickel
s202018 t302018 LRV 22%



latitude | grey
s202037 t302037 LRV 7%



latitude | ash
s202031 t302031 LRV 4%



latitude | gull
s202044 t302044 LRV 8%



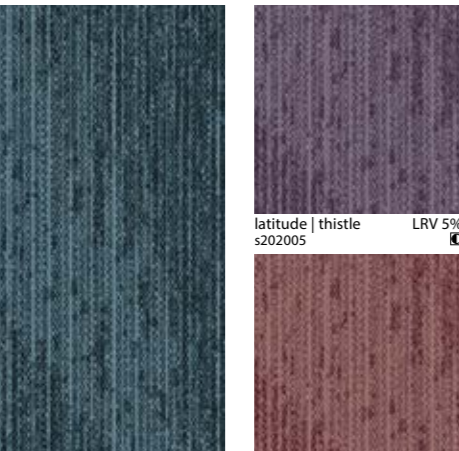
latitude | tempest
s202110 t302110 LRV 5%



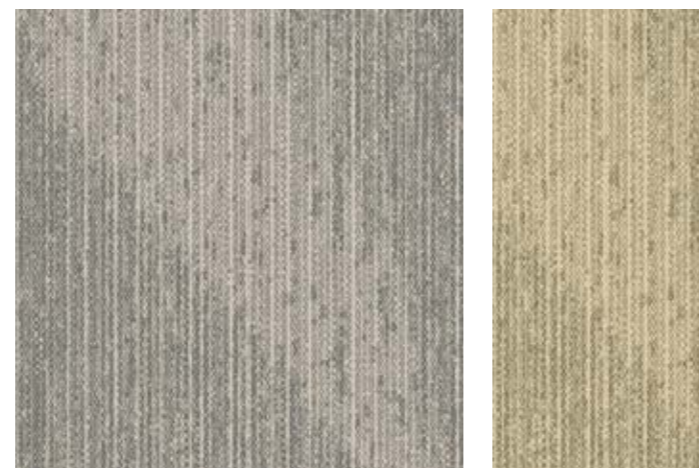
latitude | nimbus
s202073 t302073 LRV 9%



latitude | cypress
s202003 t302003 LRV 9%



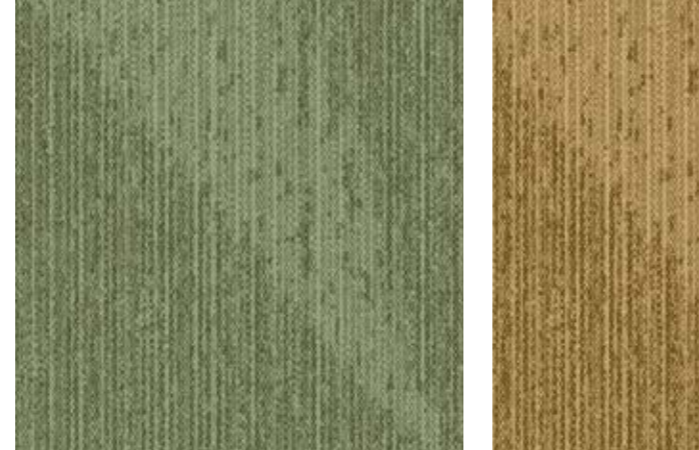
latitude | claret
s202004 t302004 LRV 6%



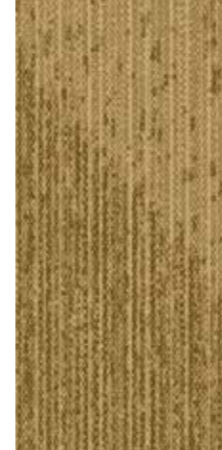
latitude | linen
s202049 t302049 LRV 17%



latitude | sand
s202077 t302077 LRV 20%



latitude | juniper
s202001 t302001 LRV 10%



latitude | mustard
s202002 t302002 LRV 12%



latitude s202037 | grey



 code nickel s203018 t303018 LRV 26%	 code ice s203001 t303001 LRV 20%	 code mineral s203084 t303084 LRV 19%	 code sand s203077 t303077 LRV 26%	 code pumice s203009 t303009 LRV 16%
 code nimbus s203073 t303073 LRV 14%	 code gull s203044 t303044 LRV 13%	 code spearmint s203005 t303005 LRV 15%	 code honey s203006 t303006 LRV 19%	 code linen s203049 t303049 LRV 23%
 code pewter s203002 t103002 LRV 14%	 code oxide s203003 t303003 LRV 10%	 code evergreen s203087 t303087 LRV 10%	 code apricot s203007 t303007 LRV 7%	 code moss s203087 t303087 LRV 10%
 code grey s203037 t303037 LRV 11%	 code ash s203031 t303031 LRV 5%	 code tempest s203110 t303110 LRV 9%	 code mauve s203008 t303008 LRV 9%	 code berry s203083 t303083 LRV 7%
 code azure s203116 t303116 LRV 5%	 code carbon s203080 t303080 LRV 7%	 code concrete s0203079 t303079 LRV 5%	 code plum s203010 LRV 7%	 code grape s203082 t303082 LRV 7%
 code cornflower s203004 t303004 LRV 8%	 code concrete s0203079 t303079 LRV 5%	 code plum s203010 LRV 7%	 code grape s203082 t303082 LRV 7%	

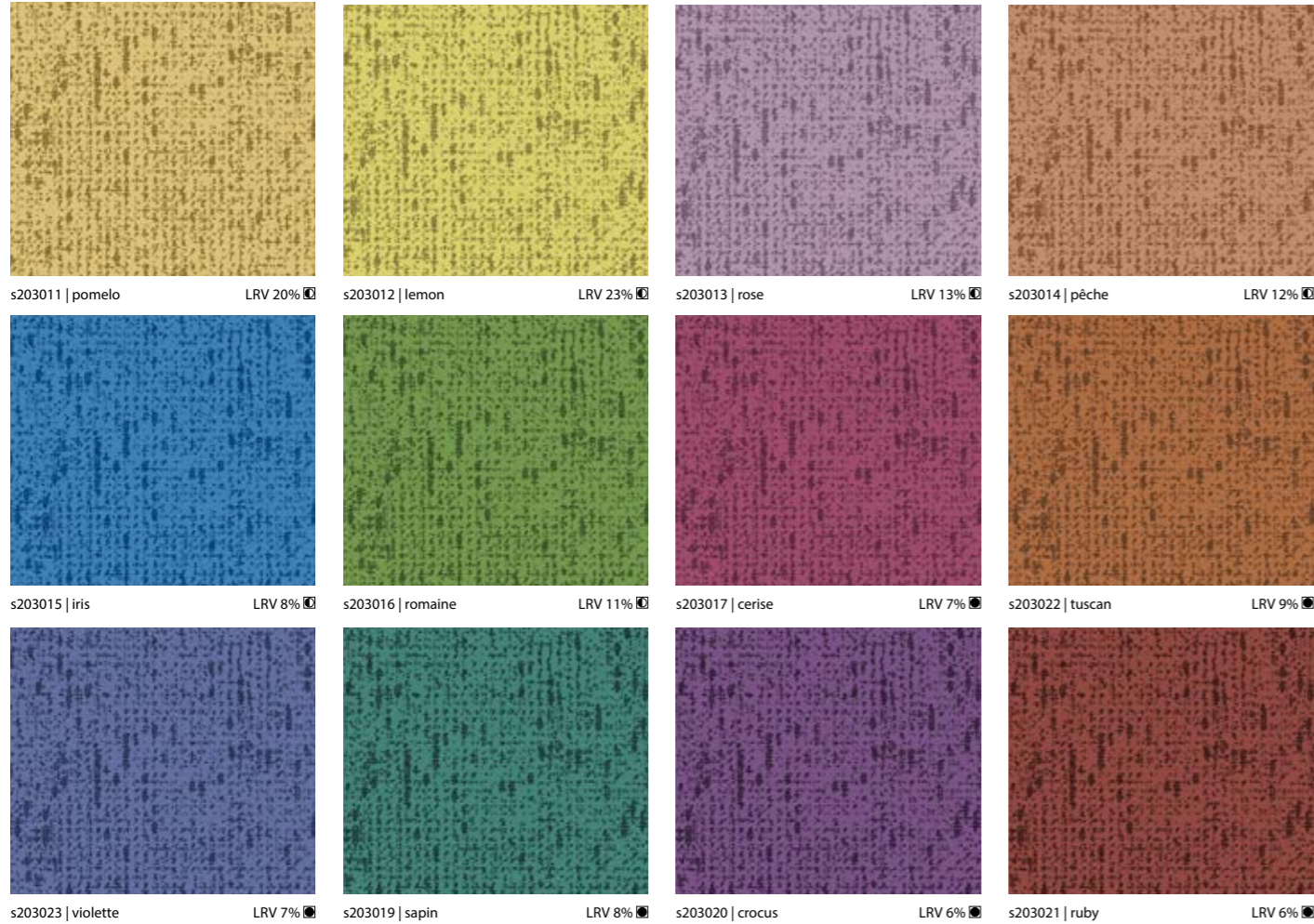
Usage classification

☐ Superior appearance rating ● Good appearance rating ● Moderate appearance rating s = Sheet t = Tile

flotex[®] advance

RECOLOURATION **OPTIONS**

We already created some additional colour possibilities for you to choose from for the Flotex Code design in sheet, so you can order a sample.



Flotex offers the flexibility to recolour Flotex Code and Flotex Latitude with your own colour, in both sheet and tiles.

1. Contact your local customer service to check minimum order quantity
2. Choose your colour reference in Pantone, NCS, RAL or material samples
3. You receive a sample for approval
4. After your approval your custom floor will be produced.



IF YOU WANT A CUSTOM COLOUR FOR YOUR FLOORING, FLOTEX OFFERS FLEXIBILITY IN MEETING THOSE NEEDS



Flotex Latitude s202049 | linen, s202110 | tempest



Flotex Naturals 010073 | heritage plank

flotex® naturals

Our Flotex Naturals range enables you to create the aesthetic of a real wood or ceramics floor, whilst maintaining the warmth, acoustics and comfort that a carpet offers.

The state-of-the-art digital printing technique achieves high quality, true to life visuals of wood and ceramic textures. Our digital printing technique achieves high quality, true to life visuals.

Flotex Naturals is available as sheet material. The high density of the Flotex fibers enables realistic designs in high level photographic resolutions.

The Flotex Naturals range can be made on our Flotex Next loose lay backing.

Flotex Next backing

Read all about the special loose lay installation options for Flotex Naturals with the Next backing. Save time, money and the environment and install without glue. Learn more about the Flotex Next backing on page 51.



010076 | limed wood LRV 25%
 010078 | shaded oak LRV 21%
 010058 | titanium oak LRV 26%



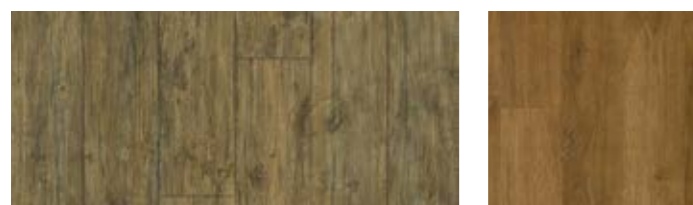
010073 | heritage plank LRV 14%
 010074 | shadow plank LRV 8%
 010077 | smoked walnut LRV 9%



010038 | white oak LRV 30%
 010034 | pear wood LRV 35%
 010042 | steamed beech LRV 26%



010080 | hungarian point



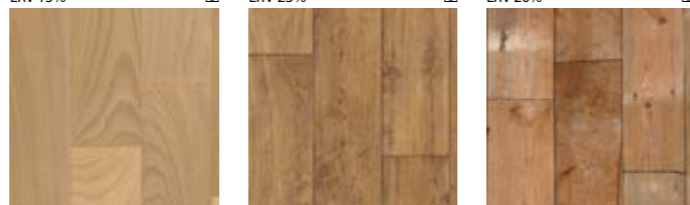
010040 | antique pine LRV 12%
 010033 | English oak LRV 20%



010075 | warm oak



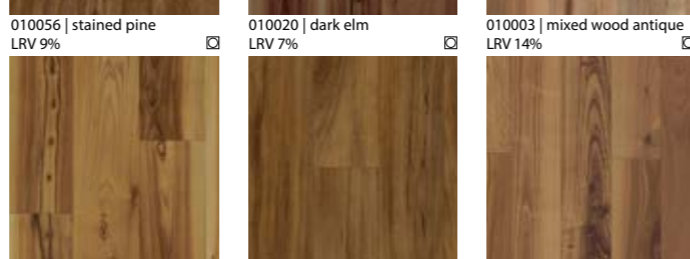
010075 | warm oak LRV 15%
 010039 | European white wood LRV 23%
 010036 | American oak LRV 20%



010041 | smoked beech LRV 28%
 010035 | distressed oak LRV 19%
 010002 | reclaimed pine LRV 17%



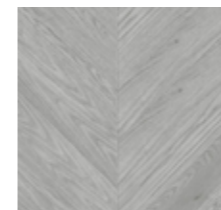
010056 | stained pine LRV 9%
 010020 | dark elm LRV 7%
 010003 | mixed wood antique LRV 14%



010012 | light elm LRV 20%
 010057 | cedar LRV 20%
 010013 | mixed wood rose LRV 20%



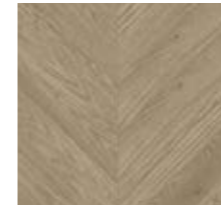
010012 | light elm LRV 20%
 010057 | cedar LRV 20%
 010037 | blackened oak LRV 20%



010079 | hungarian point grey LRV 20%



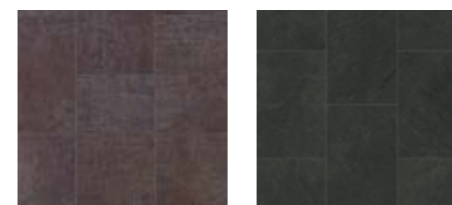
010071 | summer chevron LRV 18%



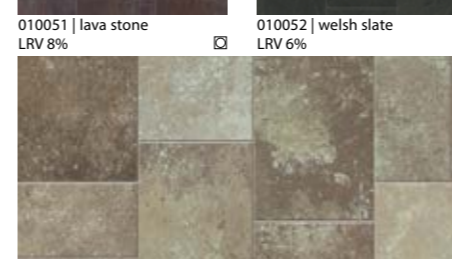
010080 | hungarian point LRV 15%



010072 | autumn chevron LRV 6%



010051 | lava stone LRV 8%



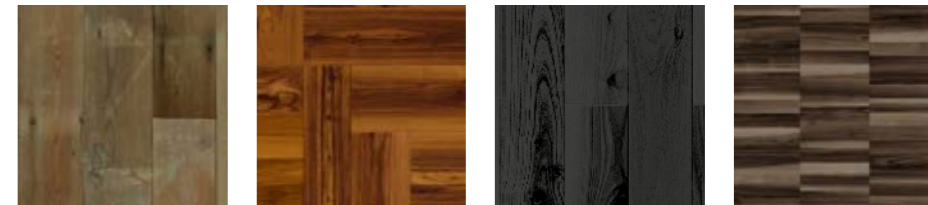
010029 | limestone slate LRV 23%



010050 | salt glaze LRV 25%



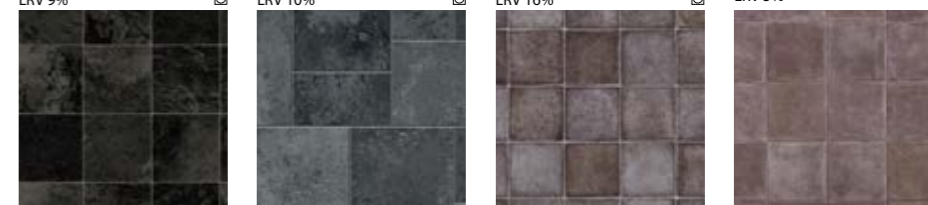
010077 | smoked walnut



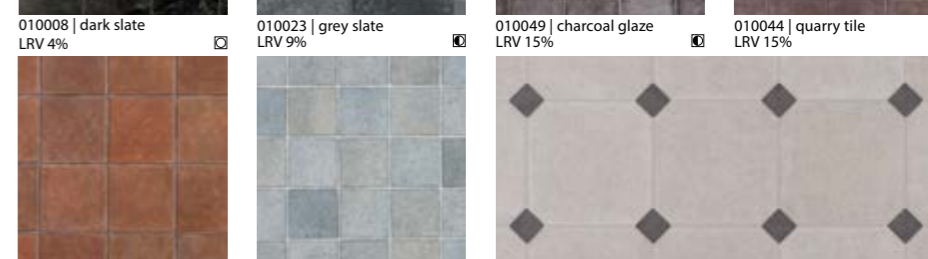
010021 | reclaimed oak LRV 10%
 010014 | teak LRV 10%
 010031 | anthracite wood LRV 3%
 010054 | walnut parquet LRV 6%



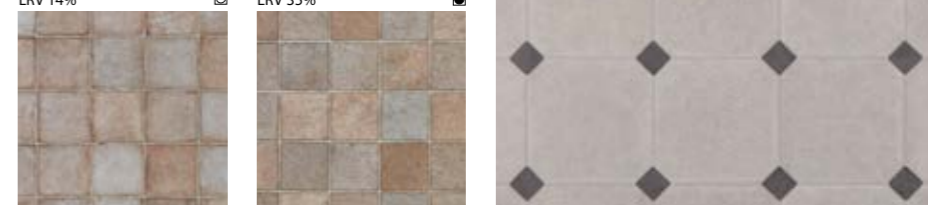
010055 | chestnut LRV 9%
 010032 | oak herringbone LRV 10%
 010017 | cork amber LRV 16%
 010046 | China black LRV 5%



010008 | dark slate LRV 4%
 010023 | grey slate LRV 9%
 010049 | charcoal glaze LRV 15%
 010044 | quarry tile LRV 15%



010045 | farmhouse tile LRV 14%
 010048 | Roman spa LRV 35%
 010043 | cornerstone LRV 38%



010047 | limestone pavement LRV 28%



Flotex planks serif 154006 | alloy, 154001 | Iron

flotex® planks

Seagrass

Organic but linear, with a design ethos rooted in biomimicry. It is naturally inspired and beautifully textured. A classic pattern with natural colours that work well together in a variety of installation methods.

Sierra

A fusion of natural textures and undulating bands that mimic the flow of mineral deposits and create a pattern that suggests depth with its layers of natural asymmetry. Strong visual contrast allowing items to be used individually or together to create existing design possibilities.

Wood

Inspired by natural wood, this familiar aesthetic takes on a new versatile guise, offering a traditional look in an untraditional format in a range of familiar easy to use tones that can be readily combined to create parquetry effects.

Travertine

An organic pattern with a timeless elegance formed from soft ripple-like layers. Its textures and delicate striations give depth and life while veins of detail reinforce its natural origins. A warm palette of colours with subtle tonal shifts give a classic and contemporary feel.

Concrete | neo concrete

Highlights of colour and geometric patterning bring new life to this classic, offering a refreshing change to the normal by mixing fun with tradition allowing transitional effects and zoning.

Ombré | montage

Strongly textile, subtly textured and shading from dark to light. Ombré colours can easily be combined to make beautiful designs or used with their coordinating Montage colourways to differentiate between areas.

Converge | converge plain

Areas of woven style pattern combine, joining at angles, creating different facets which contrast in shade or colour, forming abstract shapes and forms at random. Each colourway complemented within a range of all-over colours can be used to visually and functionally separate areas within a space helping to define purpose, guide movement, and enhance aesthetics without physical barriers.

Intersect

A balance of form and texture, this design weaves intersecting geometric bands into a tactile tapestry with crisp angles and soft faded areas that feel both engineered and organic at the same time.

Serif

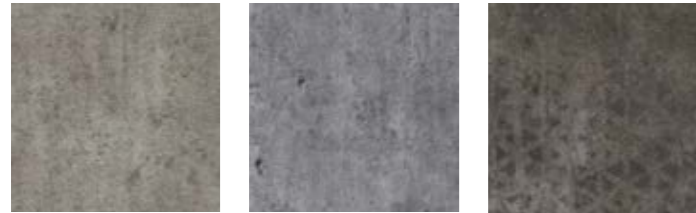
Inspired by typographic forms this design is created through the layering of characters abstracted into geometric shapes. The resulting pattern gives the impression of a typed layering with overlapping glyphs and letter fragments creating depth and shade.

Panama

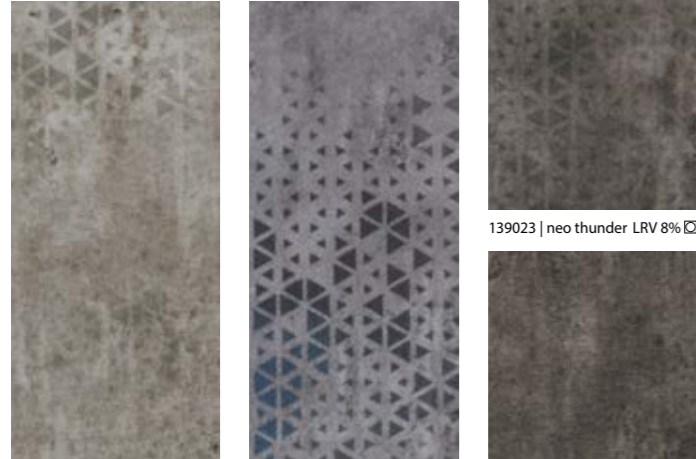
A richly woven mosaic of colour and character, this design draws from the tactile heritage of tweed. Coloured details intertwine giving the impression of a refined textile texture that evokes natural charm and urban sophistication in equal measure.

Calico

Creating the impression of a woven surface, strands of texture intertwine to form a pattern that feels crafted and dimensional. Each thread-like detail creates a grid of warmth and structure, giving the feeling of tactility.



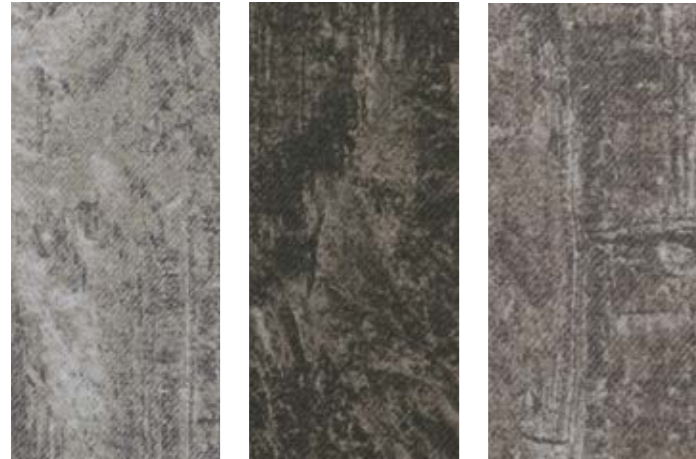
139001 | cloud LRV 18% 139005 | dusk LRV 15%



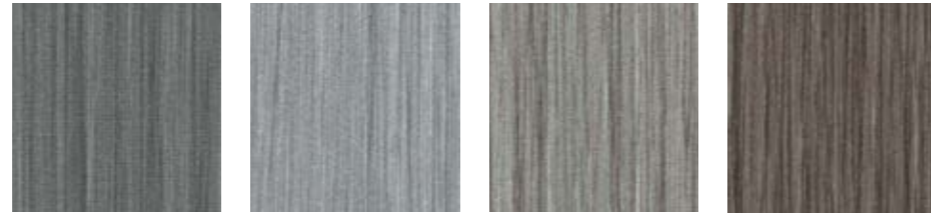
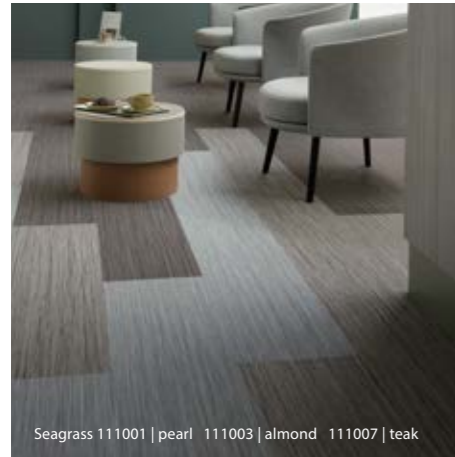
139021 | neo cloud LRV 17% 139020 | neo dusk LRV 14% 139023 | neo thunder LRV 8% 139002 | thunder LRV 11%



139022 | neo smoke LRV 12% 139003 | smoke LRV 16%



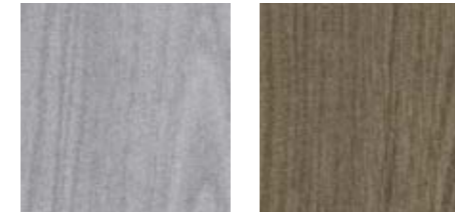
158002 | cascade LRV 15% 158004 | canyon LRV 7% 158001 | solano LRV 11% 158003 | ravine LRV 8%



111002 | cement LRV 13% 111001 | pearl LRV 26% 111003 | almond LRV 19%



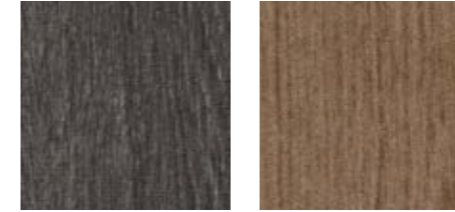
111004 | charcoal LRV 9% 111008 | ebony LRV 5% 111007 | teak LRV 8%



151003 | silver wood LRV 31% 151004 | American wood LRV 15%



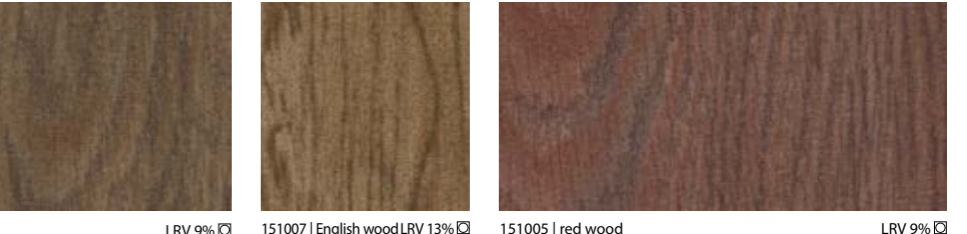
151002 | grey wood LRV 13% 151010 | drift wood LRV 12%



151001 | black wood LRV 8% 151008 | rustic wood LRV 13%



151009 | cedar wood LRV 6% 151006 | antique wood LRV 9%



151007 | English wood LRV 13% 151005 | red wood LRV 9% 151008 | rustic wood LRV 13%

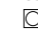




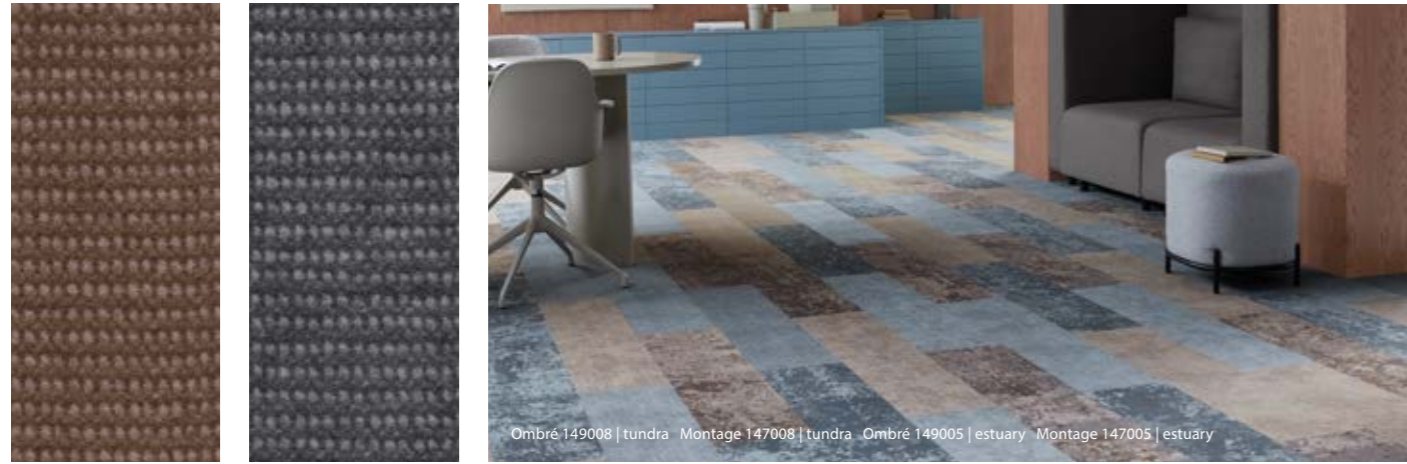
157004 | alberino LRV 31% 157002 | verdejo LRV 20% 157006 | blush LRV 19%



157005 | grigio LRV 18% 157001 | rosé LRV 15% 157003 | muscato LRV 20%

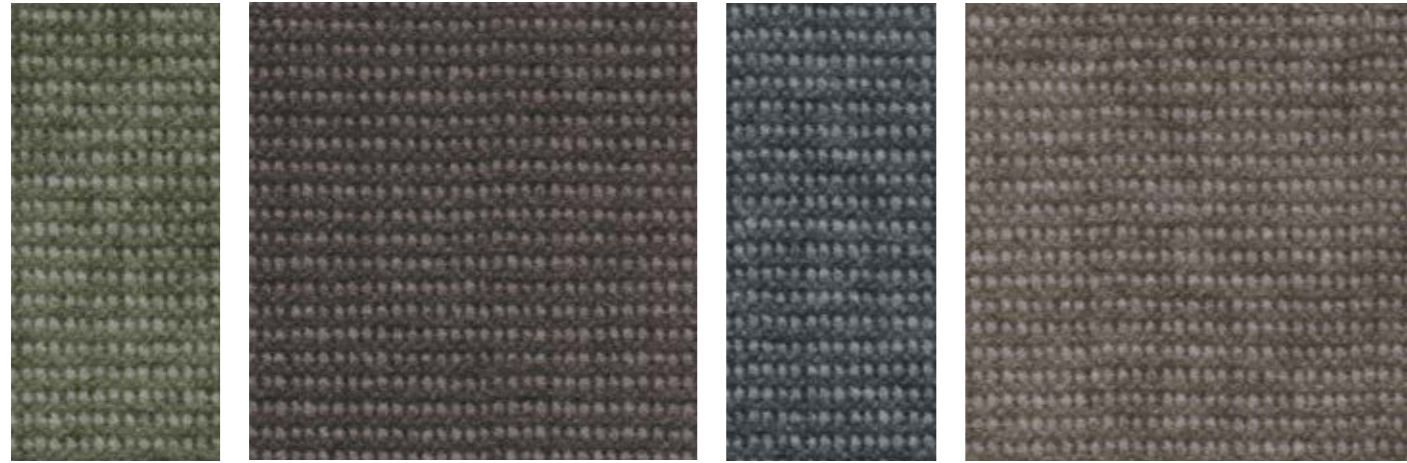
Usage classification

 Superior appearance rating  Good appearance rating  Moderate appearance rating

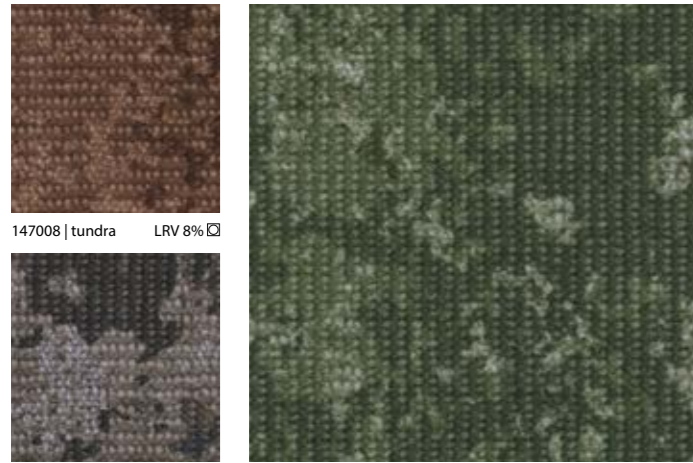


Ombre 149008 | tundra Montage 147008 | tundra Ombre 149005 | estuary Montage 147005 | estuary

149008 | tundra LRV 13% 149007 | arctic LRV 11%



149001 | boreal LRV 15% 149003 | tropic LRV 11% 149005 | estuary LRV 13% 149004 | moraine LRV 14%



147008 | tundra LRV 8% 147004 | moraine LRV 8% 147001 | boreal LRV 9%



147003 | tropic LRV 7% 147007 | arctic LRV 8% 147005 | estuary LRV 8%



Montage 147003 | tropic Ombre 149003 | tropic

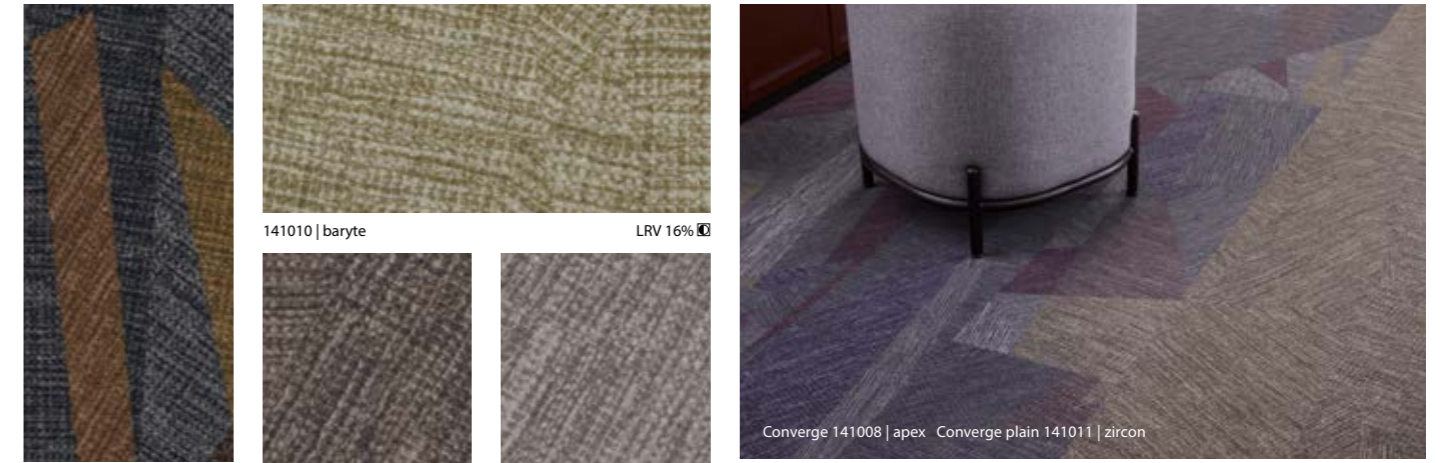


141024 | cobalt LRV 4% 141015 | azurite LRV 8% 141013 | turquoise LRV 5%

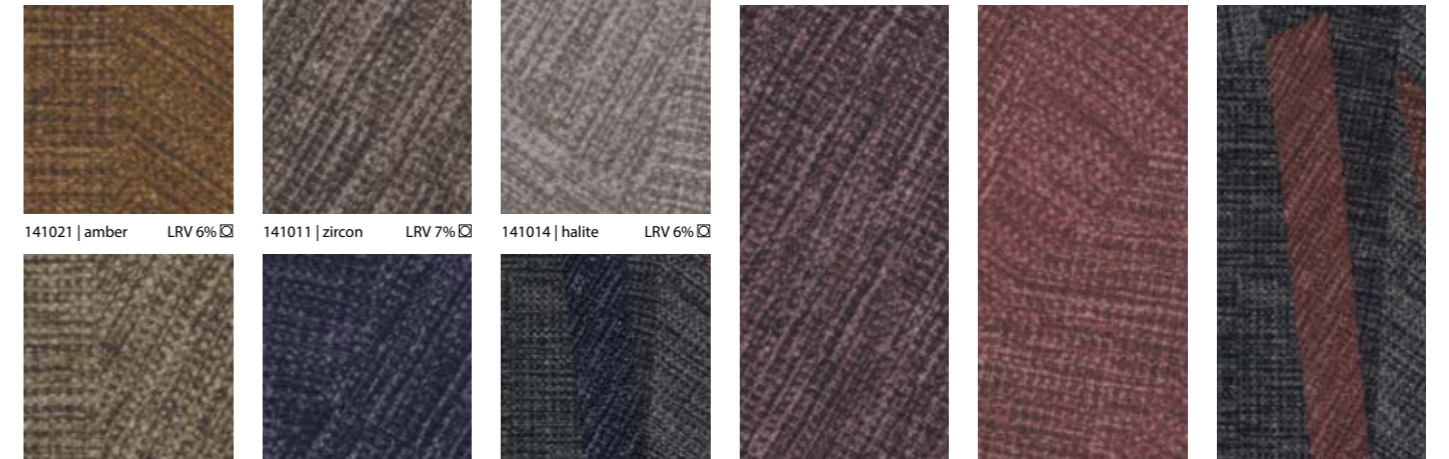


141001 | prism LRV 5% 141009 | calcite LRV 16% 141006 | arc LRV 8% 141019 | dolomite LRV 7% 141016 | mica LRV 22%

141025 | basalt LRV 4% 141023 | galena LRV 4% 141003 | zenith LRV 5% 141020 | lapis LRV 5% 141017 | peridot LRV 15% 141002 | aurora LRV 5%

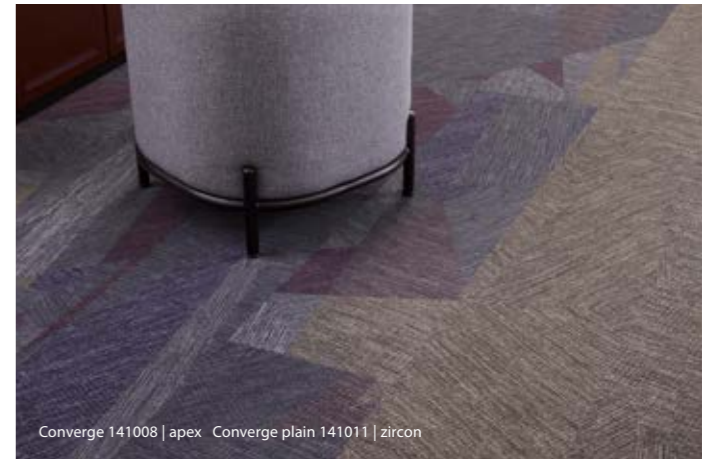


141004 | sunbeam LRV 6% 141010 | baryte LRV 16%



141004 | sunbeam LRV 6% 141021 | amber LRV 6% 141011 | zircon LRV 7% 141014 | halite LRV 6%

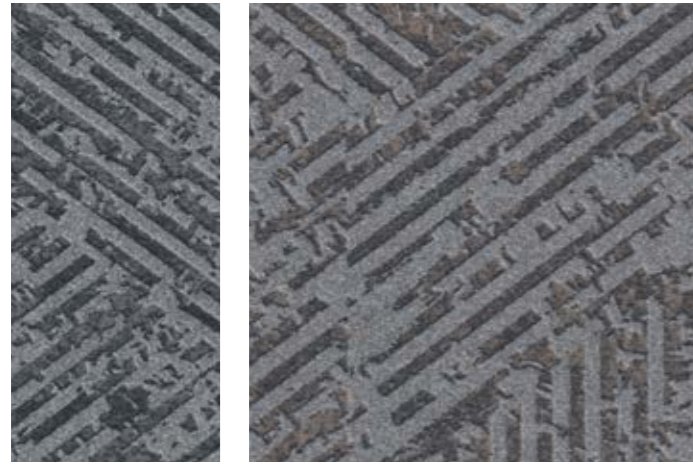
141012 | onyx LRV 6% 141026 | amethyst LRV 4% 141008 | apex LRV 4% 141027 | garnet LRV 5% 141022 | ruby LRV 5% 141005 | radiant LRV 6%


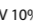


Converge 141008 | apex Converge plain 141011 | zircon

Usage classification

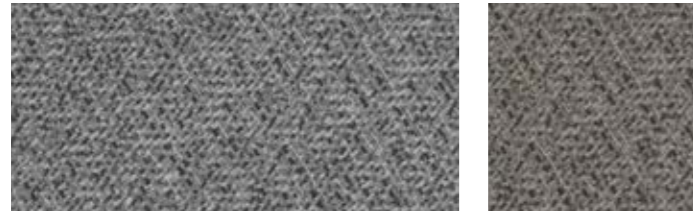
- Superior appearance rating
- Good appearance rating
- Moderate appearance rating



152002 | chrome LRV 11%  152003 | bronze LRV 10% 



152001 | zinc LRV 9%  152004 | copper LRV 11% 



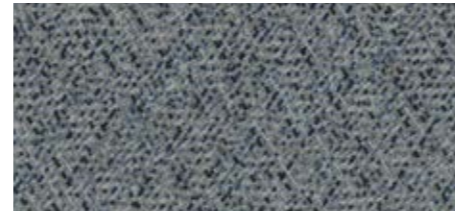
156003 | anise LRV 11%  156004 | tamarind LRV 9% 



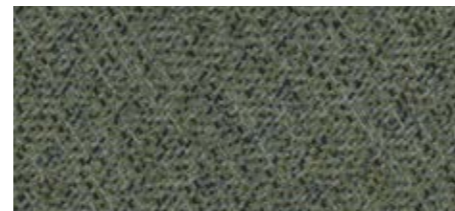
Panama 156001 | salt Intersect 152001 | zinc



Intersect 152004 | copper Panama 156002 | cardamom



156001 | salt LRV 12% 



156002 | cardamom LRV 9% 



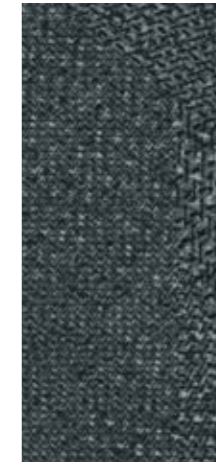
156005 | clove LRV 12% 

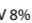


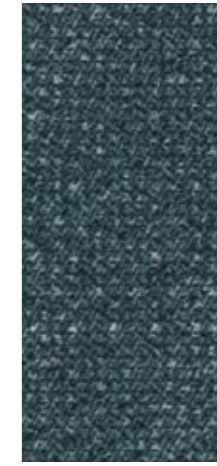
156006 | paprika LRV 12% 




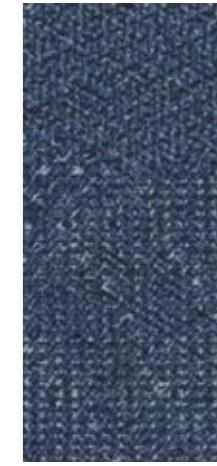
Serif 154006 | alloy 154001 | iron



154006 | alloy LRV 8% 




154003 | patina LRV 6% 




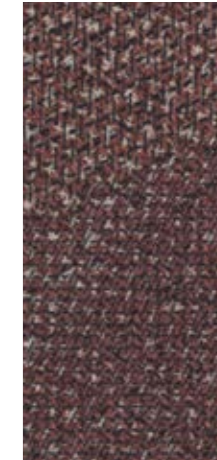
154001 | iron LRV 5% 




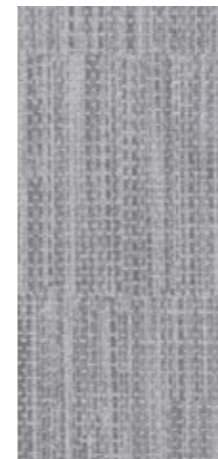
154005 | tungsten LRV 6% 

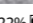


154002 | rust LRV 6% 

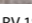


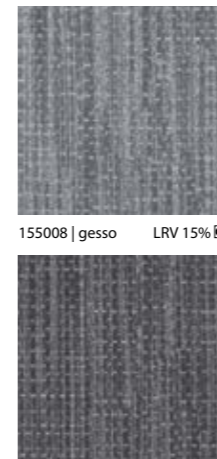
154004 | magma LRV 5% 

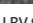


155007 | chalk LRV 22% 



155009 | putty LRV 18% 




155003 | etch LRV 9% 

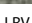


Calico 155009 | putty 155007 | chalk



155008 | gesso LRV 15% 

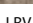


155006 | hemp LRV 11% 



155004 | clay LRV 17% 

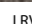


155001 | rattan LRV 11% 




155010 | glaze LRV 7% 






155005 | burlap LRV 7% 



155001 | rattan LRV 11% 

Usage classification

-  Superior appearance rating
-  Good appearance rating
-  Moderate appearance rating



flotex® created by

Forbo Flooring Systems works with world-renowned designers such as Phillippe Starck, Mac Stopa, José Medina Galeote and Ettore Sottsass to create unique floor designs that can be used in multiple environments. By combining the creativity of our own designers with the expertise of renowned designers from around the world, we strive to continuously offer new unique floor designs.

Flotex flocked flooring provides the perfect surface for dynamic graphic designs. The cutting-edge technology of digital printing gives a new lease of life to all arresting patterns created by our own design team in cooperation with other designers.

Flotex by Philippe Starck

Philippe Starck created a collection of 3 systems, named Vortex, Artist and Twilight. Each of them comes in 4 separate parts that can be freely arranged to create patterns for your project that adapts to your needs and preferences. By playing on scale and transition, each of the 3 systems challenges tradition and creates a new language in the perception of interior spaces and floor covering design.

Flotex by Tibor

Pioneering textile designer Tibor Reich - creator of Tibor - was one of the most prominent figures in the British post-war textile industry. Most of the designs are derived from Tibor's ground-breaking Fotexur collection, launched in 1957. Printed on Forbo Flotex in vibrant colours, Tibor's innovative Fotexur designs have a timeless feel, despite dating back 70 years.

Flotex by Sottsass

Ground breaking both aesthetically and technically. Flotex Sottsass flocked flooring is the result of a creative collaboration between Forbo Flooring and the Italian design studio Sottsass Associati which is responsible for the famous Memphis Design trend at the end of the last century. The Sottsass designs present unique organic forms and irregular, apparently random patterns.

Flotex by Galeote

By bringing his works of art right under our feet, José Médina Galeote explores new perspectives on various textures. Forbo's high definition printing techniques can bring the creations of José Medina Galeote to life on any floor.

Flotex by Mac Stopa

Mac Stopa is an architect, interior designer and designer of transmission forms. In collaboration with the Flotex design team, his ideas were visualised using high definition printing techniques. Several beautiful designs in the categories flower, trapezoid, wicker and hexagon have been developed for both Forbo's Flotex floors and Eternal vinyl floors. Each floor gives its own unique characteristics to the imagery of Mac Stopa.

More information on the Created by Flotex collections through
www.forbo-flooring.com/flotexcreatedby

Flotex Next backing

All items of the collection are also available in an adhesive free flooring solution: Flotex Next. Save time, money and the environment and install without any glue. More information about Flotex Next backing can be found on page 51.

flotex® hospitality & leisure

Whether in hotels, leisure areas or restaurants, you need a high performance floor covering that provides comfort and safety while giving pride of place to design. Forbo offers a special collection of easy-care Flotex floors with striking designs for the hospitality & leisure segment.

Thanks to our high-definition printing technology, we can offer you a wide selection of designs that will suit all your spaces. A trendy hotel in the heart of the city, a cosy establishment in the mountains, or a charming traditional restaurant: each concept will find the design that tells its story.

We are aware of the challenges of the hospitality and leisure sector, where you often only have one chance to make a good first impression.

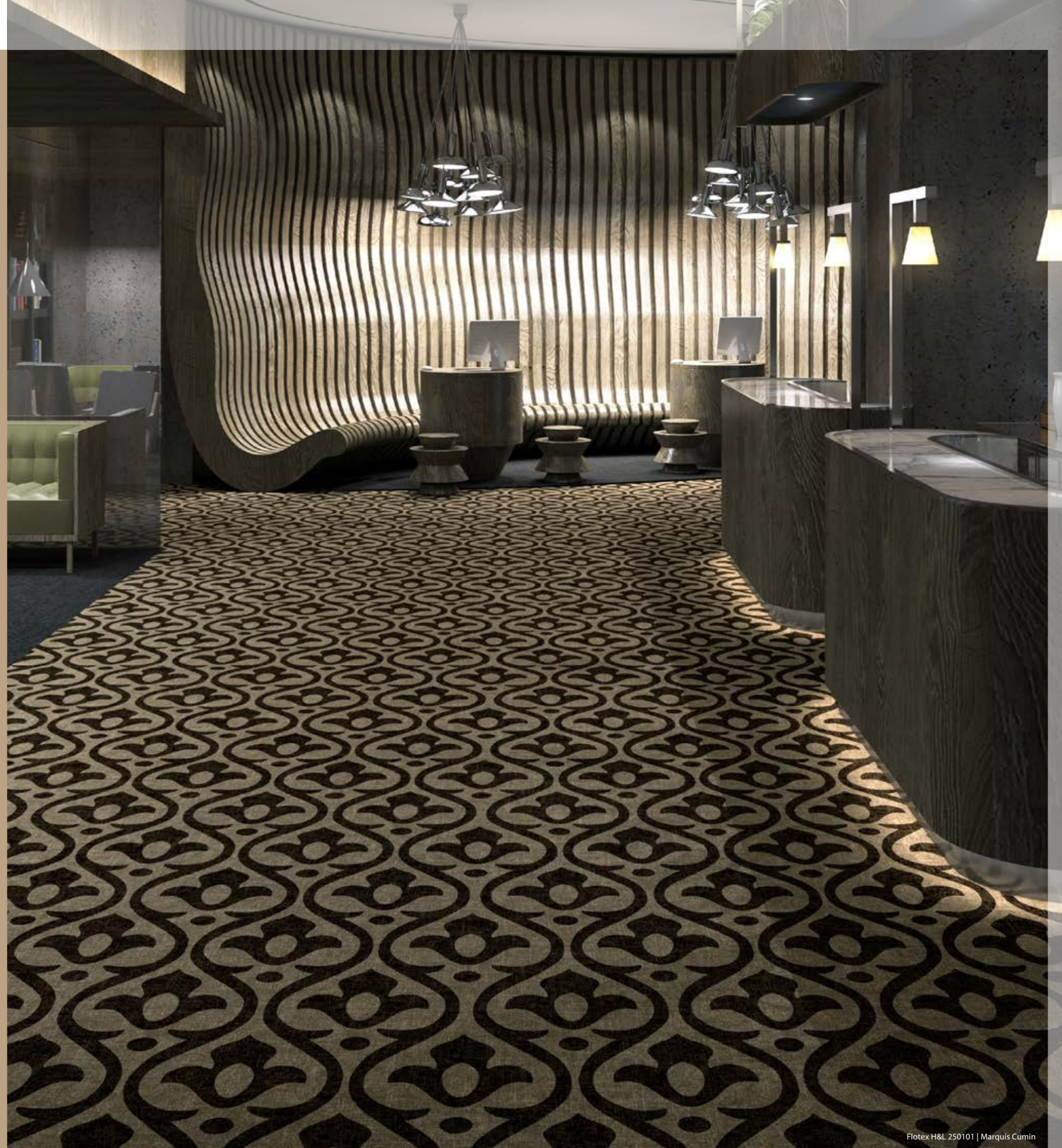
By choosing Flotex and its unique construction, you are assured of a design floor covering that will retain its original appearance over time. It is the assurance that your visitors will be welcomed in the environment you dreamed of!

There are 4 categories in the Hospitality & Leisure range; Floral, Textile, Geometric & Graphic and Statement. Some designs are especially for corridors, others fit better in large banquet halls. When you don't find what you are looking for, then please go to our digital library section or the bespoke section as we can make what you envision.

More information on the Hospitality and Leisure collection through
www.forbo-flooring.com/flotexhospitalityandleisure

Flotex Next backing

All items of the collection are also available in an adhesive free flooring solution: Flotex Next. Save time, money and the environment and install without any glue. More information about Flotex Next backing can be found on page 51.





Constructed Pattern 271002F | Memphis horizon, Flotex naturals 010079 | Hungarian point grey

flotex® vision library

Although we have a very wide range of flooring options we can still imagine that you are looking for something completely different. With the possibility of digital printing new opportunities arise. Digital print offers an infinite number of design options ranging from abstracts with intricate colour spectrums to realistic images of natural materials like grass and water. Create 3D depth or a “trompe d’oeil” effect on your floor.

Digital library

We have grouped our ‘standard’ digital print offer in a separate digital library FloorVisualizer where you can choose from 8 different categories and see how these floors look in a room. A number of designs in this digital library can be recoloured, you choose the colours and make the standard design your own.

The categories in the Flotex vision digital library are Floral, Linear, Textile, Geometric | Graphic, Organic, Natural world, Stone | Ceramic and Statement.

If these are not the designs you are looking for then we invite you to be the designer, please see our next Flotex bespoke chapter.

Visit the digital library through www.flotexvision.com

Flotex Next backing

All items of the collection are also available in an adhesive free flooring solution: Flotex Next. Save time, money and the environment and install without any glue. More information about Flotex Next backing can be found on page 51.

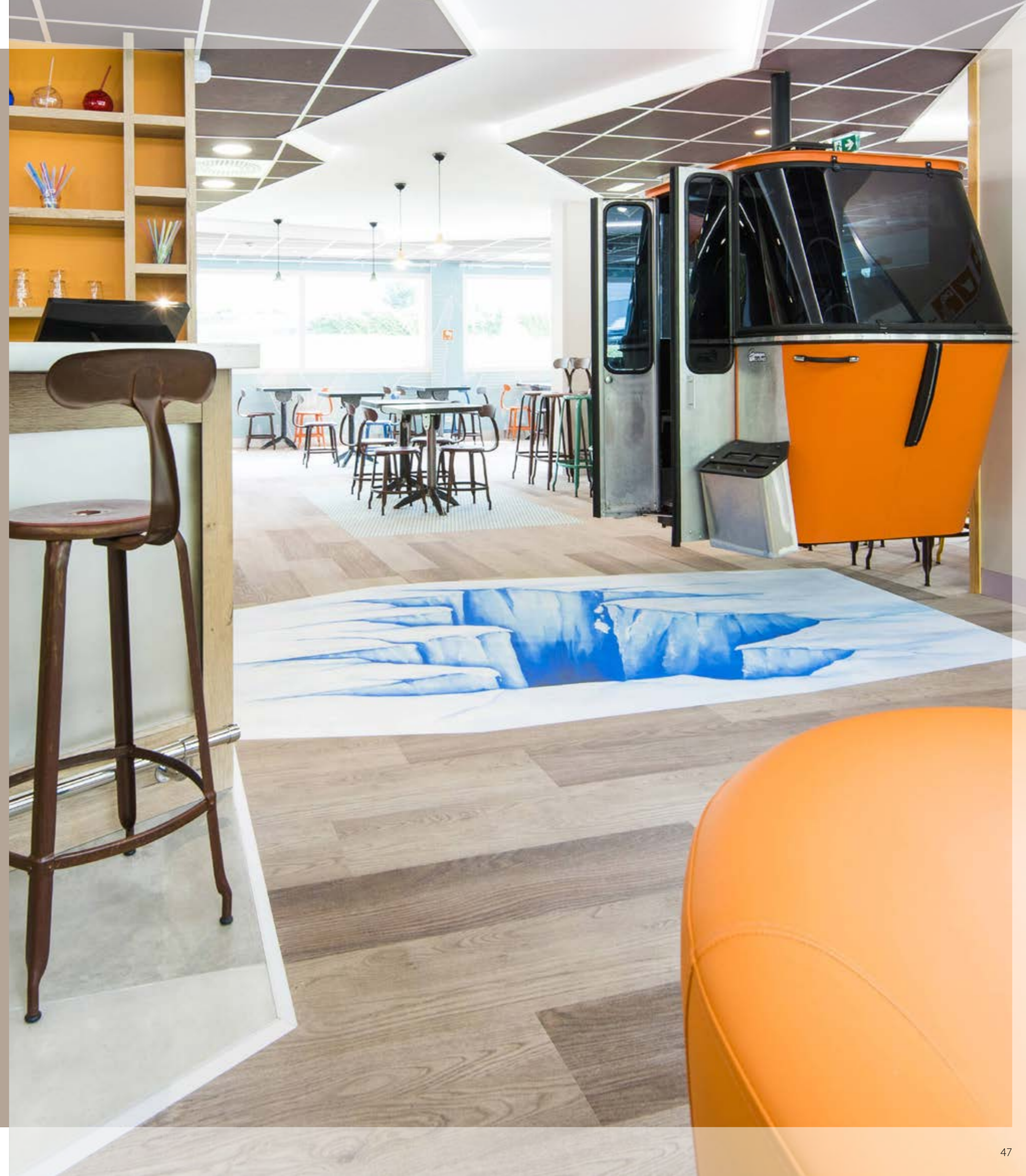
flotex® bespoke

When even the existing digital design collection is not enough, we can go one step further. You design your own floor!

Using your logo, printing a picture that connects with your company or location, it is possible. We can recolour one of our existing designs with the colours of your choice and we can print your own image in high definition for a unique floor covering. Benefit from our expertise and our unrivaled printing technology to make your vision come true and create your exclusive space.

See the next page for more information.

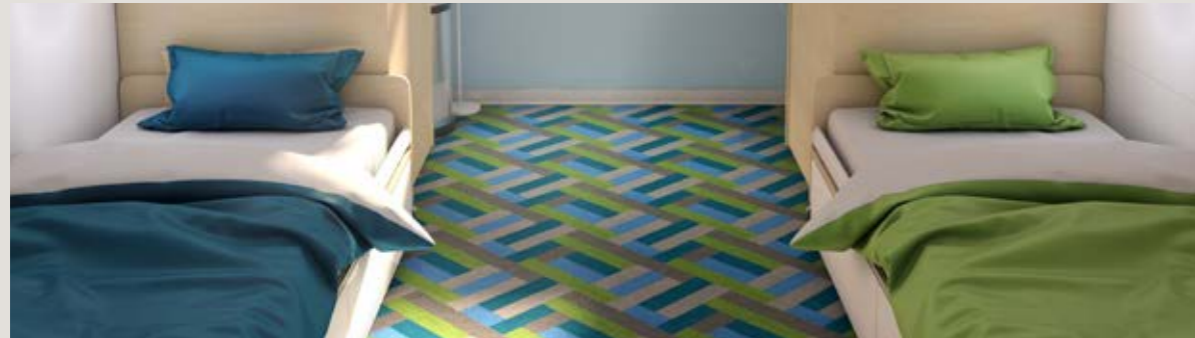
Contact your local sales rep or fill in the contact form here;
www.forbo-flooring.com/flotexbespoke



LEVELS OF CUSTOMIZATION

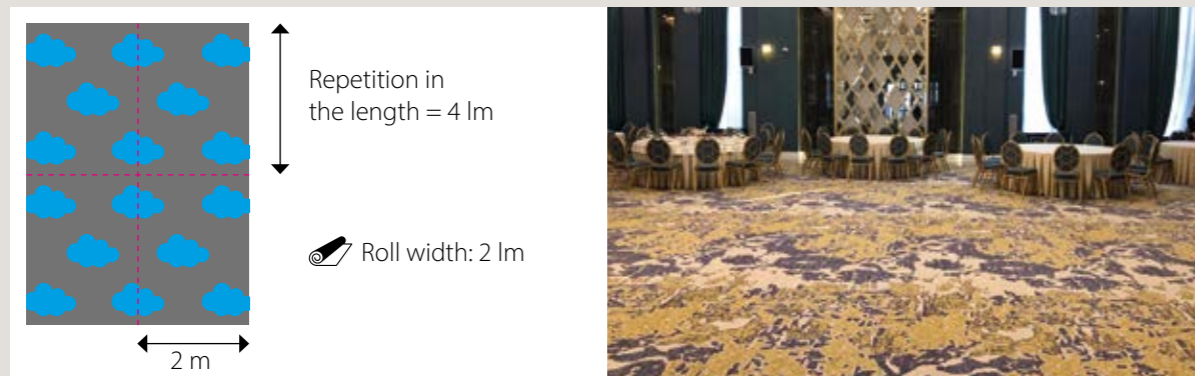
CUSTOM COLOUR

We recolour a selection of existing designs from the Flotex Vision Library with the colours of your choice.
Printing on sheet: 30 lm x 2 m



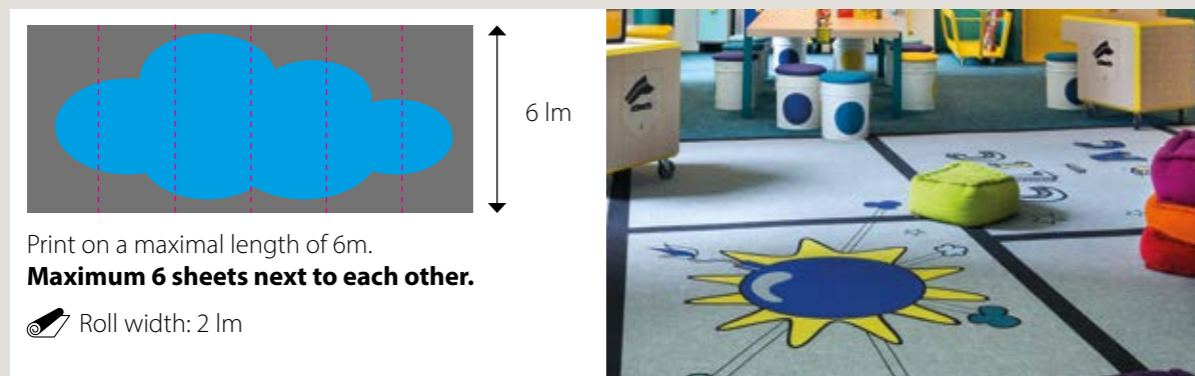
BESPOKE DESIGN – repeatable pattern

We print your repeatable image on Flotex sheet (maximum repeat of 2 x 4 m) from your own file.



BESPOKE DESIGN - panoramic

We print your image on a maximum surface of 6 sheets next to each other.
Print on roll: 6 lm maximum x 2 m



FLOTEX BESPOKE DESIGN CREATE YOUR OWN!

We can print your own image in photo quality, or we can recolour one of existing designs of our digital library.

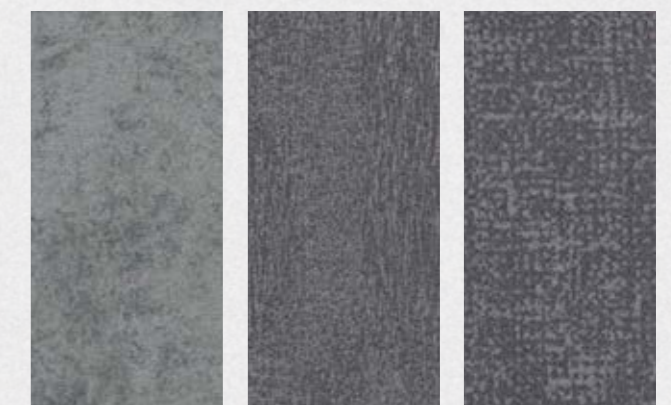


- 1 Send us your image in .tif or .jpeg format, with a minimum resolution of 150dpi in real size
- 2 Choose your colour reference in Pantone/ NCS/RAL or material samples
- 3 We send you a "ready for print" document within 2 working days.
- 4 5 working days after the validation of the "ready for print" document, we send you a 50x50 cm sample
- 5 Once the sample is approved, we create a specific code for you to place the order. Your unique Flotex can be produced!

For cleanability reasons, we do not print white colour: we use a very light grey which looks like white by contrast with the other colours around. Our digitally printed bespoke Flotex and other conventionally printed collections, such as Flotex Colour, are produced with different technologies that bring a different colour aspect. Bespoke Flotex cannot be combined with references from the Flotex Colour collection. Bespoke Flotex is available only in sheet format.

CUSTOM COLOUR

To avoid a visible edge-to-edge effect between the rolls when Flotex is laid out, we use a background texture to the designs: we do not print plain colours. Our design team selects the texture that will suit your design best: Calgary, Penang or Metro.



Calgary Penang Metro



INSTALLATION METHODS

Flotex sheet

Flotex sheet is easy and quick to install and therefore a perfect flooring solution for large commercial or public areas. Flotex sheet is available in rolls of 2x30 metres. Please see the explanation of a loose lay solution with Flotex Next which is available for all sheet collections except Flotex Colour.



Flotex tiles

Flotex tiles are easy to combine with other flooring types, other structures or even other formats. Tiles are the perfect solution when you want to create a unique floor covering with different designs and colours. Modular floors are popular nowadays, so with our Flotex tiles range we give you the possibility to create a high-quality modular floor!



Flotex planks

Flotex planks offer endless possibilities to mix and match colours within one design. Laying patterns can also create stimulating and lively environments with zigzag motives or herringbone designs. Flotex planks show little repeat in their patterning, creating interesting and beautiful floors even when only one single colour is used.



FLOTEX NEXT BACKING LOOSE LAY SHEET SOLUTION

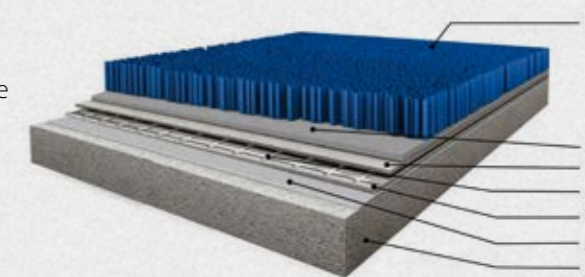
Fast flooring solution

Our Flotex Next backing, allows full loose lay installation. Not having to use installation adhesive makes Flotex Next very suitable for busy areas: installation time is reduced and there is minimal disruption or lingering adhesive odours. Flotex Next can be walked on immediately after installation. With Flotex Next only a very short time is needed to prepare the substrate and

the installation itself requires a limited number of operations. Only minimal preparation of the subfloor is required and the application of the adhesive and the drying time of the glue do not have to be taken into account. A new floor can be installed with minimal downtime or even without closing the premises.

Product construction

- adhesive free flocked flooring solution
- rapid installation with minimal downtime and disturbance
- can be walked on immediately after installation
- long term benefit of quick removal, replacement and recycling or reuse possibilities



1. nylon 6.6 pile
2. pile adhesive
3. fibreglass #1
4. fibreglass scrim
5. compact layer
6. fibreglass #2
7. closed cell PVC backing

The advantages at a glance

New builds

- Shorter installation times
- No adhesives necessary
- Reduced maintenance and service costs
- Same supplied & fitted price as a glue-down floor covering (initial installation)

Renovations

- Installation while premises are in use without any disruption
- Instantly ready for use after installation
- Possibility of covering old floor tiles (ceramic tiles, compact vinyl, etc.)



211044/232044 | nimbus

211046/232046 | grey

211031/232031 | ash

211110/232110 | tempest

211007/232007 | petrol

211016/232016 | indigo

211096/232096 | electric

211088/232088 | evergreen

211085/232085 | citrus

211099/232099 | gold

211076/232076 | pebble

211081/232081 | cocoa

211072/232072 | melon

211003/232003 | tangerine

211100/232100 | lilac

211008/232008 | red

211083/232083 | berry

211114/232114 | chocolate



15 m x 11/22 cm

flotex® borders

Our Flotex borders help you to be creative when designing your floorspace by offering the ability to frame an area, separate spaces or provide an edge to your floor with a solid insert. Flotex borders are uni-coloured strips available in 11 or 22 cm width, which can be used in combination with Flotex sheet.

Flotex borders (roll length 15 metres) can be ordered in two width sizes. The first 3 digits of the colour number indicate the width:

211xxx border 11 cm

232xxx border 22 cm

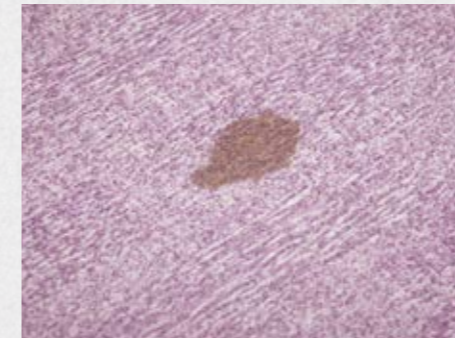


CLEANING AND MAINTENANCE

Always use an entrance mat such as Forbo Coral to keep as much dirt out of the building and keep the floor looking good for longer.

Spot cleaning

Many kinds of spills can be removed with just clean warm water or a carpet detergent. Heavier and more stubborn spills can be removed using a paint scraper and a brush.



Regular cleaning

Daily vacuuming and regular spot and stain removal keeps Flotex looking like new for years to come.



Maintenance

Periodic maintenance using spray extraction or a 3-in-1 machine (rinse/brush/water) will guarantee the best result on Flotex.



THE DYNAMICS OF A BUILDING

There is an increase in demand for transitional environments; spaces need to be able to evolve and adapt to new functions. These constantly changing spaces require walls and floors that can perform as a chameleon, with timeless colours and basic materials. The trends and changing mindsets inspired the Forbo Design team to analyse the different dynamics taking place within a building. Five themes were identified; **receiving, moving, connecting, concentrating and recharging**, with each one referring to the different identities a space can have. They express a certain state of a person or an activity taking place within the building.



RECEIVING

The theme 'receiving' describes the scenario of a person entering a building; making a transition from the outdoors to the indoors. A space where one should feel welcome and is accessible and transparent as first impressions are key. This is the area of the building that should clearly represent the 'feel' of the brand and meet the expectations of the client to make them feel comfortable and at home.

MOVING

'Moving' represents the action towards the destination and the purpose of why someone is in a building. Orientation is priority, so these areas need to be clear to read and offer guidance even when one is stressed. The space needs to be legible and aid with wayfinding.

CONNECTING

The dynamics of a 'connecting' space signifies areas where you will connect with other people within a building, such as open public spaces for spontaneous interactions or semi open spaces for dialogues or brainstorming. These areas allow for an extrovert energy boost or to give the brain time out.

CONCENTRATING

For 'concentrating', the attention is on the individual and avoiding unwelcome distractions. These are secluded spaces for privacy and focus, and while concentrating, people need a muted ambiance. Therefore, colour palettes in this area of a building should be subtle and quiet.

RECHARGING

'Recharging' is connected to mindfulness and describes relaxed environments where people can let down their guard and be themselves. This area of the building should reflect a home-like setting, to allow people to refresh and recharge. Light and fresh shades should be used here, encouraging people to take a break, breathe and escape.

HOW CAN WE HELP YOU?

We have given you all the benefits as to why a Flotex floor is the best solution for your project. We are happy to help you specify this further. Use our various tools or contact us directly.

More information about Flotex

Read the full Flotex story on our website.
www.forbo-flooring.com/flotex

Floor visualizer

Would you like to visualize the floor you have in mind in a specific room or even your own project? Please go to our floor visualizer and play around with designs and images.
www.forbo-flooring.com/floorvisualizer

Sample service

Would you like to receive a sample, please go to our website or contact our local customer service.

Installation, cleaning & maintenance

On our website you will find videos, PDF downloads and more to help you find the best way to install Flotex or to learn how you clean and maintain your floor. Our technical teams are just a phonecall away should you still have questions.
www.forbo-flooring.com/flotexdownloads

Inspiration & references

Would you like to see how others apply Flotex, then please have a look at the 'Inspiration & references' part of our website.
www.forbo-flooring.com/references

BIM files

Should you want to integrate the floors in your own technical drawings we have BIM data for all floors for you available.
www.forbo-flooring.com/BIM



Protect your floor

One of the recommended elements to keep your floor for longer is the use of a good entrance system, such as our Coral and Nuway barrier matting solutions.
www.forbo-flooring.com/entranceflooring



Contact

Should you have remaining questions, please don't hesitate to contact us via;
www.forbo-flooring.com/contact or send an email to question@forbo.com

Technical specifications

Flotex sheet meet the requirements of EN 1307



	Flotex sheet		Flotex Next backing
Collections	Flotex Colour, Flotex Naturals, Flotex Created by, Flotex H&L, Flotex Vision, Flotex Bespoke		Flotex Advance, optional for Flotex Naturals, Flotex Created by, Flotex H&L, Flotex Vision, Flotex Bespoke
Total thickness	ISO 1765	4.3 mm	3.9 mm
Total weight	ISO 8543	1,800 g/m ²	2150 g/m ²
Pile composition	100% polyamide 6.6		100% polyamide 6.6
Commercial use	EN-ISO 10874	Class 33	Class 33
Sheet roll width	2.0 m		2.0 m
Sheet roll length	± 30 m		± 25 m
Dimension stability	ISO 2551	≤ 0.2%	≤ 0.1%
Abrasion resistance	EN 1307 annex F	> 1000 cycles	> 1000 cycles
Castor chair continuous use	ISO 4918	r ≥ 2.4	r ≥ 2.4
Colour fastness to light	EN-ISO 105-B02	≥ 5	≥ 5
Slip resistance	BS 7976-2 (UK SRG pendulum)	Dry - low slip risk Wet - low slip risk	Dry - low slip risk Wet - low slip risk
Acoustic impact noise reduction	EN-ISO 717-2	ΔL _w ≥ 21 dB	ΔL _w ≥ 20 dB
Acoustic sound absorption	ISO 354	α _w = 0.10 (H)	α _w = 0.10 (H)
Water impermeability	EN 1307 annex G	Pass	Pass
Creating Better Environments			
Renewable electricity	Flotex is manufactured using 100% electricity made from renewable sources.		
Recycled content	Flotex sheet contains up to 20% recycled content by weight. Flotex Next contains up to 21.8% of recycled content by weight.		
Indoor air quality	Flotex is approved by Allergy UK. All Flotex products are tested for indoor air emissions in accordance with EN 16516 after 3 days and 28 days. Flotex sheet has ultra low emissions.		
Indoor Emissions: TVOC after 28 days	EN 16516	≤ 0.1 mg/m ³	≤ 0.1 mg/m ³
SKA	Flotex meets SKA Rating criteria for M12 for soft floor coverings in office, retail and higher education schemes.		
LCA	Life Cycle Assessment is the foundation for securing the lowest environmental impact.		
Flotex meets the requirements of EN 14041:2004	EN 14041:2004 1200101- DoP - 012	CE	EN 14041:2004 1200401- DoP - 210
Flotex HD meets the requirements of EN 14041:2004	EN 14041:2004 1200301- DoP - 107	CE	
Reaction to fire	EN 13501-1	B _{f1} -s1, L, NCS	B _{f1} -s1, L, NCS
Fire resistance	ISO 9239.1	>4.5kW/m ² <750%.min	>4.5kW/m ² <750%.min
Slip resistance Appendix D Appendix A	AS 4586 (dry and wet conditions)	R12 P5	R12 P5
Body voltage	ISO 6356	≤ 2.0 kV	≤ 2.0 kV
Thermal conductivity	EN 12524	0.06 W/mK	0.06 W/mK
Content of specific dangerous substances	EN 14041	Compliant	Compliant

Our recommended adhesive for Flotex Sheet is 640 Eurostar Special. Flotex Next can be installed loose laid using a double side adhesive tape (Forbo Modul'up ref 792) at the seams and at door thresholds, or Flotex Next can be fully glued with our recommended adhesive 640 Eurostar special. Please contact customer services for more information. All Forbo Flooring Systems' sales organisations worldwide have a certified Quality Management System in accordance with ISO 9001. All Forbo Flooring Systems' manufacturing operations have a certified Environmental Management System in accordance with ISO 14001. The Life Cycle Assessment (LCA) of Forbo Flooring Systems' products is documented in individual Environmental Product Declarations (EPD's) which can be found on all of our websites.



Technical specifications

Flotex tiles and planks meet the requirements of EN 1307



	Flotex Tiles		Flotex Planks
Collections	Flotex Colour, Flotex Advance		
Total thickness	ISO 1765	5.0 mm	5.0 mm
Total weight	ISO 8543	4800 g/m ²	4800 g/m ²
Pile composition	100% polyamide 6.6		100% polyamide 6.6
Commercial use	EN-ISO 10874	Class 33	Class 33
Tile size	50 x 50 cm		-
Packaging per carton	12 (3 m ²)		-
Plank size	-		100 x 25 cm
Packaging per carton	-		10 (2,5 m ²)
Dimensional stability	EN 986	≤ 0.1 %	≤ 0.1 %
Abrasion resistance	EN 1307 annex F	>1000 cycles	>1000 cycles
Castor chair continuous use	ISO 4918	r ≥ 2.4	r ≥ 2.4
Colour fastness to light	EN-ISO 105-B02	≥ 5	≥ 5
Slip resistance	BS 7976-2 (UK SRG pendulum)	Dry - low slip risk Wet - low slip risk	Dry - low slip risk Wet - low slip risk
Acoustic impact noise reduction	EN-ISO 717-2	ΔL _w ≥ 19 dB	ΔL _w ≥ 19 dB
Acoustic sound absorption	ISO 354	α _w = 0,10 (H)	α _w = 0,10 (H)
Water impermeability	EN 1307 annex G	Pass	Pass
Creating better environments			
Renewable electricity	Flotex is manufactured using 100% electricity made from renewable sources.		
Recycled content	Flotex tiles and planks contains up to 59% recycled content by weight.		
Indoor air quality	Flotex is approved by Allergy UK. All Flotex products are tested for indoor air emissions in accordance with EN 16516 after 3 days and 28 days.		
Indoor air emissions: TVOC after 28 days	EN 16516	≤ 0,1 mg/m ³	≤ 0,1 mg/m ³
SKA	Flotex meets SKA Rating criteria for M12 for soft floor coverings in office, retail and higher education schemes.		
LCA	LCA is the foundation for securing the lowest environmental impact.		
Flotex tiles and planks meet the requirements of EN 14041:2004	EN 14041:2004 1200201- DoP - 101	CE	EN 14041:2004 1200201- DoP - 101
Reaction to fire	EN 13501-1	B _{f1} -s1, L, CS	B _{f1} -s1, L, CS
Fire resistance	ISO 9239.1	>4.5kW/m ² <750%.min	>4.5kW/m ² <750%.min
Slip resistance Appendix D Appendix A	AS 4586 (dry and wet conditions)	R12 P5	R12 P5
Body voltage	ISO 6356	≤ 2.0 kV	Antistatic ≤ 2.0 kV
Thermal conductivity	EN 12524	0.06 W/mK	0.06 W/mK
Content of specific dangerous substances	EN 14041	Compliant	Compliant

Our recommended tackifier for our collection for Flotex Modular is 542 eurofix tack plus. Please contact customer services for more information. All Forbo Flooring Systems' sales organisations worldwide have a certified Quality Management System in accordance with ISO 9001. All Forbo Flooring Systems' manufacturing operations have a certified Environmental Management System in accordance with ISO 14001. The Life Cycle Assessment (LCA) of Forbo Flooring Systems' products is documented in individual Environmental Product Declarations (EPD's) which can be found on all of our websites.







Forbo Flooring Systems is part of the Forbo Group, a global leader in flooring and movement systems, and offers a full range of flooring products for both commercial and residential markets. High quality linoleum, vinyl, textile, flocked and entrance flooring products combine functionality, colour and design, offering you total flooring solutions for any environment.

New Zealand

Inzide Commercial
Level 2, 34 Barrys Point Road
Takapuna, Auckland 0622
Tel: +64 9 441 9850
Fax: +64 9 441 9851
E-mail: sales@inzide.co.nz
www.inzide.co.nz

Australia

Forbo Flooring Systems
23 Ormsby Place
Wetherill Park, NSW 2164
Tel: 1800 224 471
Fax: 1800 662 566
E-mail: info.au@forbo.com
www.forbo-flooring.com.au

Find us on



267090/04/2026

creating better environments

Forbo

FLOORING SYSTEMS